



**DR. BALASAHEB SAWANT KONKAN**  
**KRISHI VIDYAPEETH, DAPOLI.**

<b>Name of Work :-</b>	<b>Providing repairs to 'Goat Shed No. 1' at L.S.R.S. Nileli Tal- Kudal Dist- Sindhudurg</b>
------------------------	--

<b>Estimated Cost Rs. 2,29,878/-</b>
--------------------------------------

अंदाजपत्रक

विभाग	:— विद्यापीठ अभियंता, बांधकाम शाखा, डॉ. बाळासाहेब सावंत कोकण कृषि विद्यापीठ, दापोली, जि. रत्नागिरी.
उपविभाग	:— सहाय्यक अभियंता, डॉ.बा.सा.को.कृ.वि., बांधकाम—दक्षिण उपविभाग, शिरगांव, रत्नागिरी.
कामाचे नांव	:— पशुधन संशोधन केंद्र निळेली येथे शेळी गोठा क्रमांक १ चे दुरूस्ती करणे ता. कुडाळ, जि. सिंधुदूर्ग
निधी शिर्षक	:—
अंदाजपत्रकीय रक्कम	:— २,२९,८७८/-
जिल्हा दरसूची	:— एस. एस. आर. महाराष्ट्र राज्य (सा. बा. वि.) दरसूची सन २०२२-२३

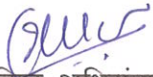
सदरचे अंदाजपत्रक श्री. आय. जी. मुल्लाणी, कनिष्ठ अभियंता, उद्यानविद्या महाविद्यालय, मुळदे ता. कुडाळ, जि. सिंधुदूर्ग यांनी तयार केले आहे व सहाय्यक अभियंता, बांधकाम—दक्षिण उपविभाग, शिरगांव, रत्नागिरी यांनी ते तपासले.

सर्वसाधारण वर्णन

डॉ. बाळासाहेब सावंत कोकण कृषि विद्यापीठ अंतर्गत पशुधन संशोधन केंद्र निळेली ता. कुडाळ, जि. सिंधुदूर्ग येथे शेळीपालन संशोधन मध्ये “कोकण कन्याळ” ही जात विकसित आहे. यांचे पालनाकरीता वापरण्यात येणारी गोठा क्र. १ च्या खिडक्यां मोडकळीस आल्या आहेत. तसेच त्यांना लावलेल्या लोखंडी जाळी ही पूर्णपणे गंजलेली आहे. पावसाच्या पाण्यापासून (वावझडी) संरक्षण होण्याकरीता वेदरशेड दुरूस्ती व शेडच्या डाव्या बाजूला पूर्णपणे जी. आय. पत्र्याचे क्लॅडिंग करणे अत्यंत गरजेचे आहे. जेणेकरून आतमध्ये ठेवण्यात आलेल्या शेळीचे संरक्षण व गोठा वापरणेस सोईचे होईल या दृष्टीने अत्यावश्यक प्राथमिक दुरूस्तीचे सविस्तर अंदाजपत्रक तयार करण्यात आले आहे.

तांत्रिक संक्षिप्त टिपणी

सदर अंदाजपत्रकामध्ये यापुर्वी लावलेले व मोडकळीस आलेले जुन्या खिडक्या काढणे, त्या ठिकाणी एम. एस. ग्रील लावणे, स्ट्रक्चरल स्टीलचे काम करणे, प्रीकोटेड पत्रे बसविणे, किरकोळ प्लॅस्टर व रंगकाम करणे इत्यादी अनुषंगीक बाबींचा अंतर्भाव करणेत आला आहे.



कनिष्ठ अभियंता  
उद्यानविद्या महाविद्यालय, मुळदे  
ता. कुडाळ, जि. सिंधुदूर्ग

सहाय्यक अभियंता  
डॉ.बा.सा.कोकण कृषि विद्यापीठ,  
बांधकाम—दक्षिण उपविभाग,  
शिरगांव, रत्नागिरी.

विद्यापीठ अभियंता  
डॉ. बाळासाहेब सावंत कोकण  
कृषि विद्यापीठ, दापोली,  
ता. दापोली, जि. रत्नागिरी.


**DR. BALASAHEB SAWANT KONKAN KRISHI VIDYAPEETH, DAPOLI.**

**Name of the Work :- Providing repairs to Goat Shed No-1 at L.S.R.S. Nileli, Tal-Kudal, Dist-Sindhudurg.**

**RECAPITULATION SHEET**

<b>Sr.No</b>	<b>Essential Item</b>		<b>Cost (Rs.)</b>
1	Building Proper / Cost of Construction		1,87,655.65
2	Royalty Charges		-
3	Material Testing Charges		-
(Total of Sr.No 1 to 3, Say A) Total in Rs.			<b>1,87,655.65</b>
4	G. S. T. -	18% on A	33,778.02
5	Insurance-	0.5% on Sr. No.1	938.28
6	Contingency-	4% on Sr. No.1	7,506.23
(Total of Sr.No 4 to 6, Say B) Total in Rs.			<b>42,222.53</b>
<b>Total (A+ B) in Rs.</b>			<b>2,29,878.18</b>
<b>Say Rs.</b>			<b>2,29,878.00</b>

Note-Prepared as per PWD SSR 2022-23 w.e.f. 25/07/2022.

  
**(I. G. Mullani)**  
Junior Engineer (Civil)  
College of Horticulture,  
Mulde.

**(R. A. Dhanawade)**  
Assistant Engineer  
Works - South Sub Division,  
Dr. B. S.K.K.V., Dapoli

**(N. M. Kulkarni)**  
University Engineer,  
Dr. B. S.K.K.V., Dapoli


**DR. BALASAHEB SAWANT KONKAN KRISHI VIDYAPEETH, DAPOLI.**

Name of the Work :- Providing repairs to Goat Shed No-1 at L.S.R.S. Nileli, Tal-Kudal, Dist- Sindhudurg.

**ABSTRACT SHEET**

Sr. No.	Item of work	SSR Item No	Quantity	Rate	Unit	Amount
<b>Part A - Civil Work</b>						
1	Removing doors and windows with frames and stacking the materials as directed with all leads, lifts etc. complete.	46.15	14.00	156.00	One Number	2184.00
2	Providing and fixing mild steel grill work for windows, ventilators, etc. 15 Kilogram/ One Square Metre as per drawing including fixtures necessary welding and painting with one coat of anticorrosive paint and two coats of oil painting complete.	40.02	55.07	1713.20	One Square Metre	94345.92
3	Providing, fabricating and erecting at site of work the tubular steel structure (shed) as per standard design and specifications having various spans in between trusses and in multiples of standard length of bays as specified as per standard specifications, inclusive of cost of steel tubular trusses, tubular columns purlins, tie runners, foundation bolts, base plates, nuts and bolts, welding wherever required etc. as per detailed drawing inclusive of one coat of anticorrosive paint and two coats of oil painting of approved quality and shade etc. complete. Spec. One Number : As directed by Engineer-in-charge.	23.07	0.242	115244.27	Metric Tonne	27889.11
4	Providing and fixing colour coated Zinalume ( R ) AZ150 ( min 150 gms/sq.mt. total on each side ) profiled sheets for roofing. The feed material is manufactured out of nominal 0.45 mm Base Metal Thickness ( BMT ) ( 0.5 mm TCT ), Hi-strength steel with min.550 MPa yield strength, metallic hot dip coated with Aluminium-Zinc alloy ( 55% aluminium 43.4% zinc 1.6% silicon ) with COLORBOND ( R ) steel quality super durable polyester paint coat ( with inorganic pigment ). The paint shall have a total coating thickness of nominal 35 um, comprising of nominal 25 um exterior coat on top surface and nominal 10 um reverse coat on back surface. Profile sheet shall have nom. 950-1050 mm effective cover width and nominal 25-30 mm deep ribs with subtle square fluting in the five pan at nominal 180-250 mm center- to-center. The end rib shall be designed for anti-capillary groove. and return leg. The feed material should have coil manufacturers product details marked a regular interval. Including fasteners with min. fastened with min. 25 um Zinc-Tin alloy coated, Hex head, self-drilling screw etc. complete. ( weight of profile 4.52 Kilogram/ One Square Metre )	38.34	43.27	1174.87	One Square Metre	50836.62
5	Providing internal / external 20 mm thick Ready Mix plaster confirming to IS:4031(Part-4) 1988 and IS 383-1970 in a single coat using Cement mortar of proportion 1:4 containing special type of polymer additives about 0.4%, to all type of surfaces in all positions including scaffolding and curing complete	51.118	25.00	417.00	One Square Metre	10425.00
6	Providing and applying two coats of water proof cement paint of approved manufacture and of approved colour to the plastered surfaces including scaffolding if necessary, cleaning and preparing the surface, watering for two days etc. complete.	35.13	25.00	79.00	One Square Metre	1975.00
<b>(Part A) Total in Rs.</b>						<b>187655.65</b>

Note-Prepared as per PWD SSR 2022-23 w.e.f. 25/07/2022.

  
(I. G. Mullani)  
Junior Engineer (Civil)  
College of Horticulture,  
Mulde.

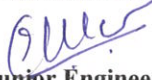
(R. A. Dhanawade)  
Assistant Engineer  
Works - South Sub Division,  
Dr. B. S.K.K.V., Dapoli

(N. M. Kulkarni)  
University Engineer,  
Dr. B. S.K.K.V., Dapoli

**DR. BALASAHEB SAWANT KONKAN KRISHI VIDYAPEETH, DAPOLI****Name of the Work :- Providing repairs to 'Goat Shed No. 2' at L.S.R.S. Nileli Tal- Kudal Dist- Sindhudurg****MEASUREMENT SHEET**

It. No.	Description of Work	No.	Length	Breadth	Height	Contents	Quantity	Unit
1	Removing doors and windows with frames and stacking the materials as directed with all leads, lifts etc. complete.							
	Front Side	4	1				4.00	
	Left Side	3	1				3.00	
	Back Side	4	1				4.00	
	Right Side	3	1				3.00	
	Total						14.00	14.00 Nos
2	Providing and fixing mild steel grill work for windows, ventilators, etc. 15 Kilogram/ One Square Metre as per drawing including fixtures necessary welding and painting with one coat of anticorrosive							
	Front Side	1	1	2.67	1.85		4.94	
		1	1	2.65	1.85		4.90	
		1	1	2.65	1.83		4.85	
		1	1	2.65	1.12		2.97	
	Left Side	1	1	2.87	2.07		5.94	
		1	1	2.72	2.05		5.58	
		1	1	2.87	2.07		5.94	
	Back Side	1	1	2.67	1.86		4.97	
		1	1	2.66	1.87		4.97	
		1	1	2.65	1.88		4.98	
		1	1	2.66	1.89		5.03	
	Total						55.07	55.07 Sqm
3	Providing, fabricating and erecting at site of work the tubular steel structure (shed) as per standard design and specifications having various spans in between trusses and in multiples of standard length of							
	Location / Section	No.	Length	Weight (kg/m)	Weight (kg)	Weight (MT)		
	Purlin []100x50x3	1	3	8.90	6.60	176.22	0.176	
	Purlin []50x25x2	1	2	14.00	2.15	60.2	0.06	
	HoldFast (Flat 100x6)	3	2	0.20	4.71	5.65	0.006	
	Total						0.242	0.242 M. T.
4	Providing and fixing colour coated Zinalume ( R ) AZ150 ( min 150 gms/sq.mt. total on each side ) profiled sheets for roofing. The feed material is manufactured out of nominal 0.45 mm Base Metal							
		1	1	9.33	2.46		22.95	
		1	1	14.32	1.00		14.32	
		1	1	6.00	1.00		6.00	
	Total						43.27	43.27 Sqm
5	Providing internal / external 20 mm thick Ready Mix plaster conforming to IS:4031(Part-4) 1988 and IS 383-1970 in a single coat using Cement mortar of proportion 1:4 containing special type of polymer							
	Lump Sum						25.00	
	Total						25.00	25.00 Sqm
6	Providing and applying two coats of water proof cement paint of approved manufacture and of approved colour to the plastered surfaces including scaffolding if necessary, cleaning and preparing the surface, <del>watering for two days etc. complete</del>							
	Lump Sum						25.00	
	Total						25.00	25.00 Sqm

Note :- Material obtained after executing Item no. 1 above will be submitted to user department.

  
**Junior Engineer**  
 College of Horticulture,  
 Mulde.

**Assistant Engineer**  
 Works - South Sub Division,  
 Dr. B. S.K.K.V., Dapoli


**University Engineer,**  
 Dr. B. S.K.K.V., Dapoli

RATE ANALYSIS

Material	Cement/ Steel/ Sheets	VSI Sand	Natural Sand	Murum	Crush Metal	H.B. Metal	Rubble	Cut Laterite	Bricks	Brick Bats	Flooring Tiles
Unit	M. T.	Cum	Cum	Cum	Cum	Cum	Cum	Cum	1000 Nos	Cum	Sqm
Lead Charges	413.27	888.61	693.47	252.22	888.61	851.59	1087.13	1029.24	1350.47	577.40	41.33

Sr. No.	Item of Work / Floor Level	SSR												Complete Rate (H+J+K+ L+M)	Add 0% / 1 % / 2% as per Floor Lift	Unit
		Page No	It. No.	Required Material						Lead Charges						
A	B	C	D	E	F	G	H	I	J	K	L	M	N	O	P	
1	Removing doors and windows with frames and stacking the materials as directed with	296	46.15	0.00	0.00	0.00	156.00	0.00	0.00	0.00	0.00	0.00	0.00	156.00	One Number	
2	Providing and fixing mild steel grill work for windows, ventilators, etc. 15 Kilogram/ One	264	40.02	0	0	0.00	1707.00	6.20	0.00	0.00	0.00	0.00	0.00	1713.20	One Square Metre	
3	Providing, fabricating and erecting at site of work the tubular steel structure (shed) as	173	23.07	1.00	0.00	0.00	114831.00	413.27	0.00	0.00	0.00	0.00	0.00	115244.27	Metric Tonne	
4	Providing and fixing colour coated Zincalume ( R ) AZ150 ( min 150	237	38.34	0.00452	0.00	0.00	1173.00	1.87	0.00	0.00	0.00	0.00	0.00	1174.87	One Square Metre	
5	Providing internal / external 20 mm thick Ready Mix plaster conforming to IS:4031(Part-	383	51.118	0.00	0.00	0.00	417.00	0.00	0.00	0.00	0.00	0.00	0.00	417.00	One Square Metre	
6	Providing and applying two coats of water proof cement paint of approved manufacture	224	35.13	0.00	0.00	0.00	79.00	0.00	0.00	0.00	0.00	0.00	0.00	79.00	One Square Metre	

Note-Prepared as per PWD SSR 2022-23 w.e.f. 25/07/2022.

  
(P.C. Mullani)  
Junior Engineer (Civil)  
College of Horticulture,  
Mulde.

(R. S. Dhanawade)  
Assistant Engineer  
Works - South Sub Division,  
Dr. B. S.K.K.V., Dapoli


(N. M. Kulkarni)  
University Engineer,  
Dr. B. S.K.K.V., Dapoli

**Lead Statement**

[ C.B.F. Nileli ]

Sr. No.	Name of Material	Name of Quarry	Total Lead in Km (x)	Distance in Km (x1)	Distance in Km (x2)	Lead Charges for Distance x1 (y1)	Lead Charges for Distance x2 (y2)	Lead Charges for dist (x- x1) in range x1 to x2 km Say y'		Total Lead Charges for Lead x km (y1 + y')	Unit
								$= \frac{(y2 - y1)(x2 - x1)}{(x2 - x1) \times (x - x1)}$	$y'$		
1	VSI Sand	Hiwali	50	50	50	888.61	888.61	0.00	0.00	888.61	Cum
2	Natural Sand	Nerur	35	35	35	693.47	693.47	0.00	0.00	693.47	Cum
3	Crush Metal	Hiwali	50	50	50	888.61	888.61	0.00	0.00	888.61	Cum
4	H.B. Metal	Hiwali	50	50	50	851.59	851.59	0.00	0.00	851.59	Cum
5	Rubble	Hiwali	50	50	50	1087.13	1087.13	0.00	0.00	1087.13	Cum
6	Murum	Local	5	5	5	252.22	252.22	0.00	0.00	252.22	Cum
7	Cut Laterite	Chauke	45	45	45	1029.24	1029.24	0.00	0.00	1029.24	Cum
8	Brick Bats	Pinguli	26	25	30	566.86	619.56	52.70	5.00	1029.24	Cum
9	Bricks	Pinguli	26	25	30	1330.98	1428.44	97.46	5.00	577.40	Cum
10	Cement, Steel, Sheets, Distemper	Kudal	25	25	25	413.27	413.27	0.00	0.00	413.27	1000 Nos
11	Pipes	Kudal	25	25	25	413.27	413.27	0.00	0.00	413.27	M.T.
12	Roofing Tiles	Kudal	25	25	25	826.54	826.54	0.00	0.00	826.54	Cum
13	Flooring Tiles	Kudal	25	25	25	41.33	41.33	0.00	0.00	41.33	Sqm

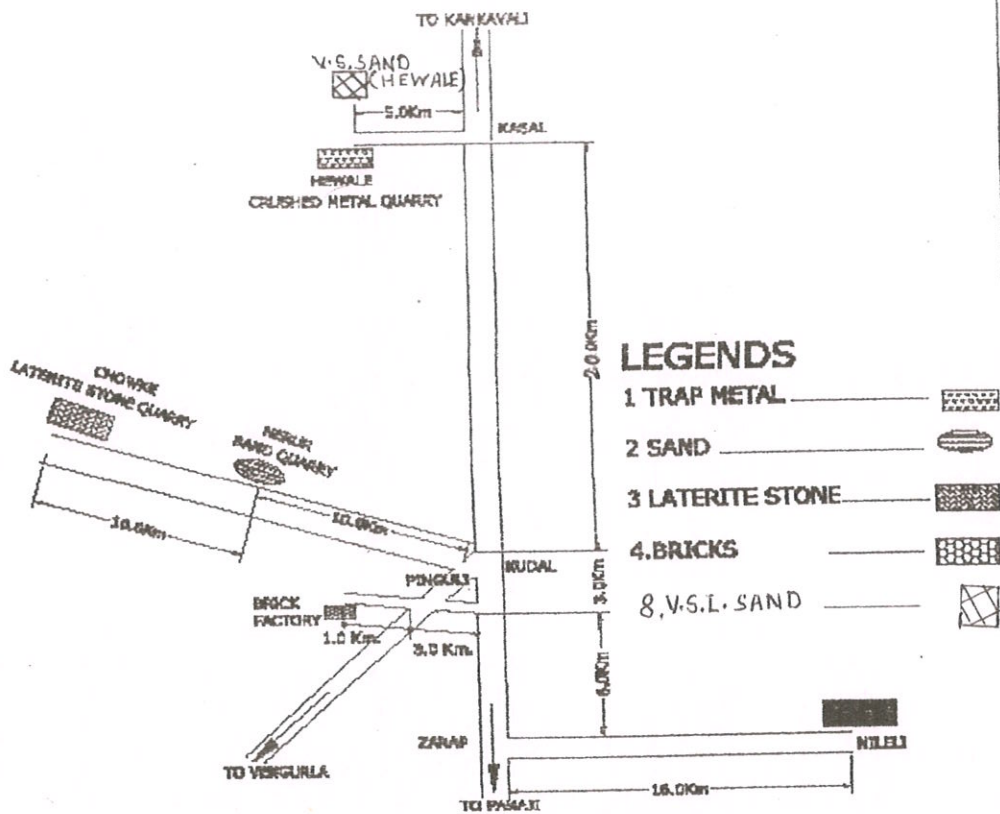
Note-Prepared as per PWD SSR 2022-23 w.e.f. 25/07/2022.

  
 (K.G. Mullani)  
 Junior Engineer (Civil)  
 College of Horticulture,  
 Mulde.

(R. A. Dhanawade)  
 Assistant Engineer  
 Works - South Sub Division,  
 Dr. B. S.K.K.V., Dapoli

(N. M. Kulkarni)  
 University Engineer,  
 Dr. B. S.K.K.V., Dapoli

# LEAD AND QUARRY CHART FOR CATTLE BREED FARM NILELI



NO.	MATEIALS	PLACE	DISTANCE
1	TRAP METAL/ RUBBLE	HEWALE	$16.0+6.0+3.0+20.0+5.0=50.0\text{KMS.}$
2	SAND	NERUR	$16.0+6.0+3.0+10.0=35.0\text{KMS.}$
3	LATERITE STONE	CHOWKE	$16.0+6.0+3.0+10.0+10.0=45\text{ KMS.}$
4	BRICKS /BRICKS BATS	PINGULI	$16.0+6.0+3.0+1.0=26.0\text{ KMS.}$
5.	H.B. METAL	HEWALE	$16+6+3+20+5 = 50.00\text{KMS}$
6.	MURUM	LOCAL	5.0 KMS
7.	CEMENT, STEEL SHEETS, DISTEMPER GI, CI, AC PIPES ROOFING TILES FLOORING TILES	KUDAL	$16.00 + 9.00 = 25.00\text{ KMS}$
8.	V.S. SAND	HIWALE	$16.0+6.0+3.0+20.0+5.0 = 50.0\text{KMS.}$

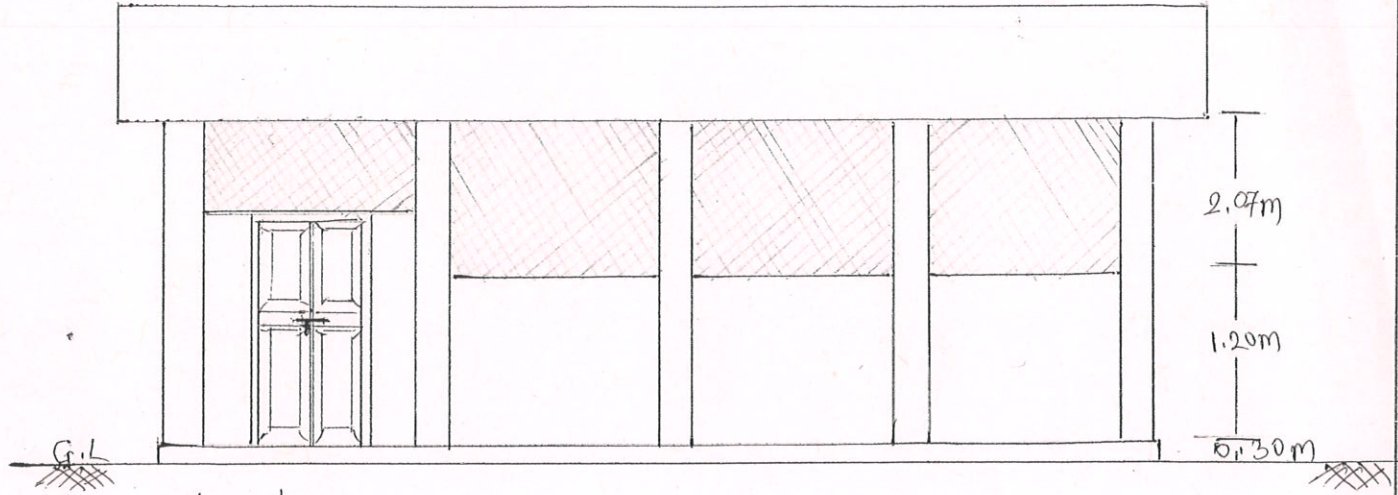
*Handwritten signature*

JE.

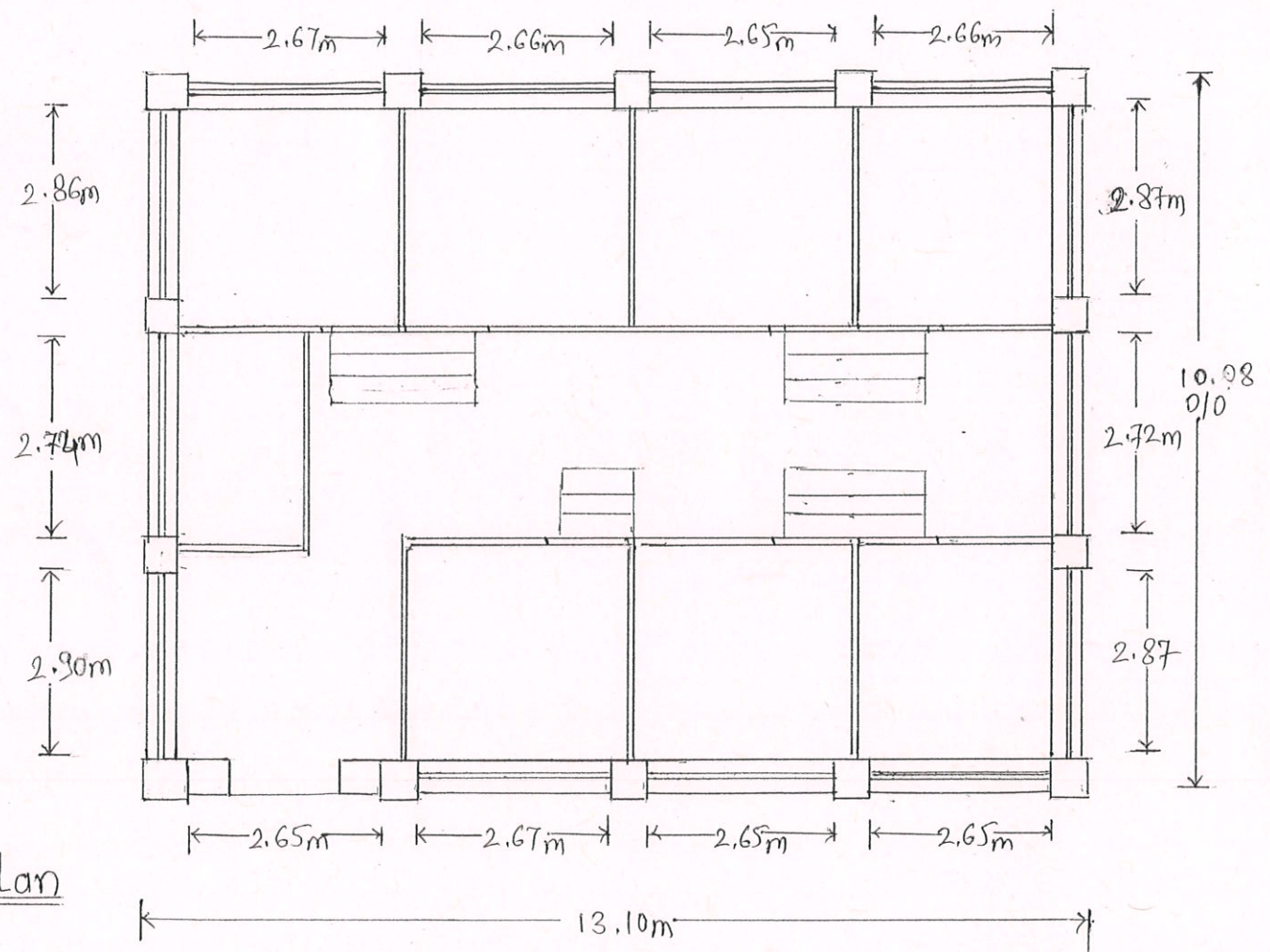
AE.

U.E.


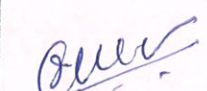


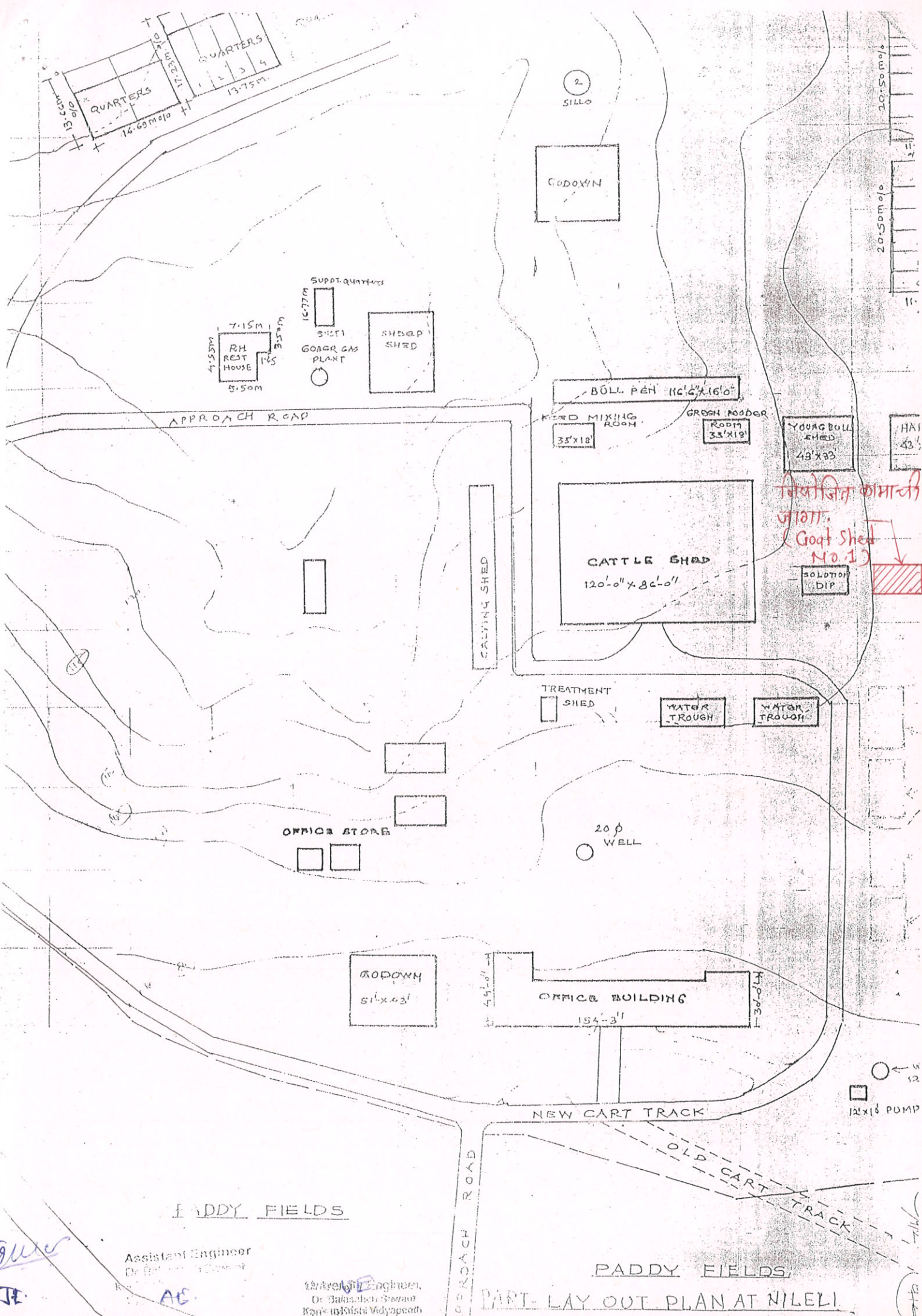


Elevation



Plan

DRG. NO. 02/2022 SSDS	Dr. Balasaheb Sawant Konkarn Krishi Vidyapeeth Dapoli, Ratnagiri			
Date: 18/02/2022	Name of Work: Proposed repair of Goat Shed No. 2 at L.S.R.S. Nileli, Tal-Kudal, Dist: Sindhudurg.			
 Tracer	D/man	 Jr. Engineer	Assistant Engineer	University Engineer



निलेजि कामाची  
 जाण.  
 (Cow Shed No. 1)

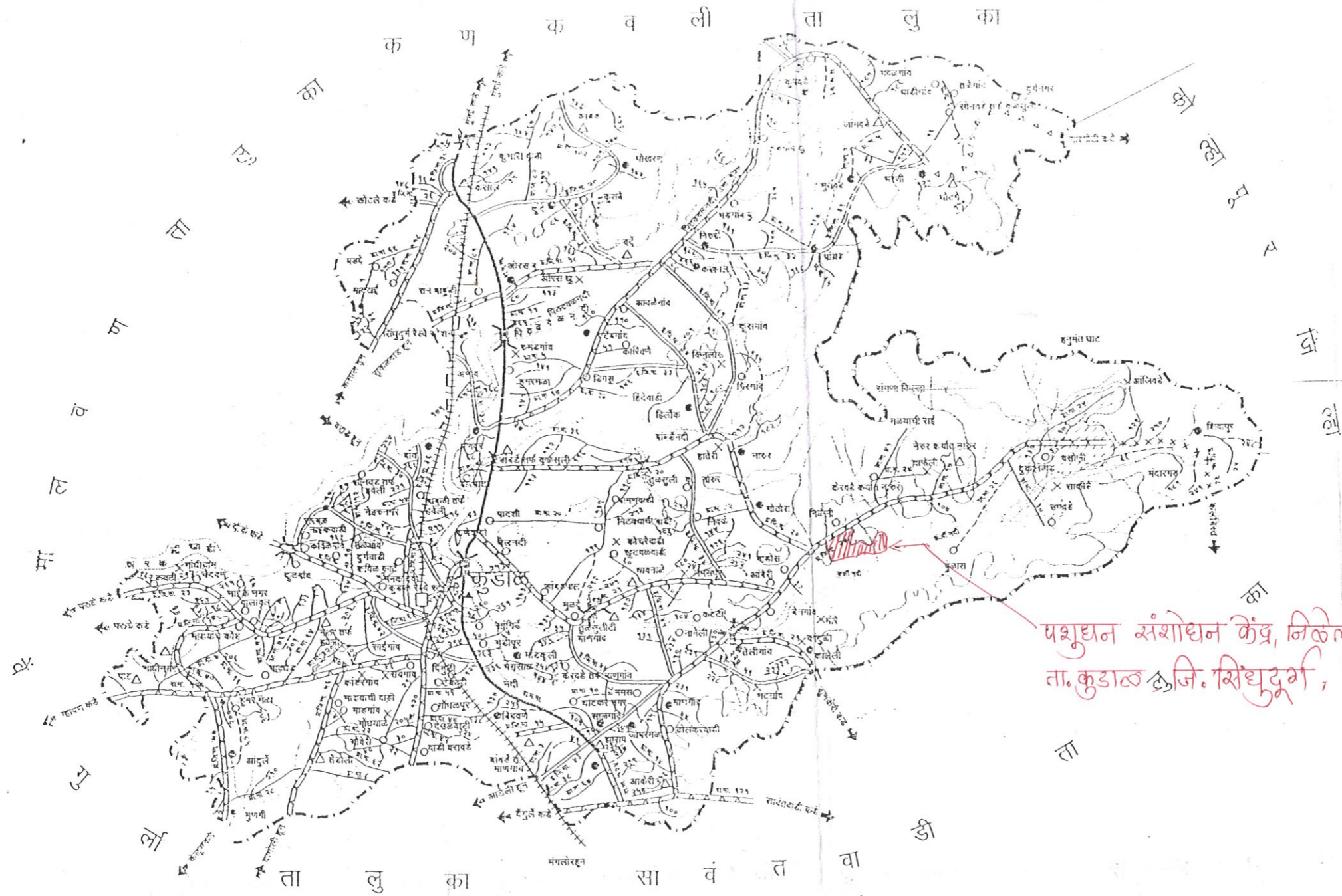
Assistant Engineer  
 Dr. ...

AE

Assistant Engineer,  
 Dr. ...

PART-LAY OUT PLAN AT NILELI

१९८१-२००१.  
रस्ते विकास योजना  
मध्यावधी पुनर्विलोकन  
कुडाळ तालुका



१९८१ जनगणना सुची

जनगणना सुची १९९१ प्रमाणे	चिन्ह	गांवे
५०३ हून कमी	×	१७
५०० ते ९९९	○	६०
१००० ते १४९९	●	२९
१५०० ते ४९९९	△	१७
५००० ते ९९९९	▲	१
१०००० ते ४९९९९	□	—
५००००० त्याहून अधिक	■	—

वर्गीकरण तक्ता

प्रकार	अंरितत्वात असलेले	नियोजित	मजुर लांबी की.मी.
राष्ट्रीय महामार्ग	■■■■	●●●●	३५
प्रमुख राज्यमार्ग	■■■■	□□□□	—
राज्यमार्ग	■■■■	△△△△	८९
प्रमुख जिल्हा मार्ग	■■■■	××××	१५९
इतर जिल्हा मार्ग	■■■■	====	१४०
ग्रामीण मार्ग	■■■■	-----	६४६
मोठे पूल	———	———	—

टीप:

१ रेल्वे आखाणी	+++++
२ च लायस	.....
३ फरेटन स्थळे	.....
४ रत्नेसाधारण वनक्षेत्र	□
५ रक्षीत वनक्षेत्र	□
६ पूर्ण तालुका डोंगरी क्षेत्रा मध्ये येतो / विंगर आदिवासी क्षेत्र	□

पशुधन संशोधन केंद्र, निकेली  
ता. कुडाळ ज. सिंधुदूर्ग

रत्नागिरी (सा. वा.) मंडळ रत्नागिरी

University Engineer,  
Roads & Bridges,  
Kudal Taluka, District, Sindhudurg  
Maharashtra

JE

AE

UE